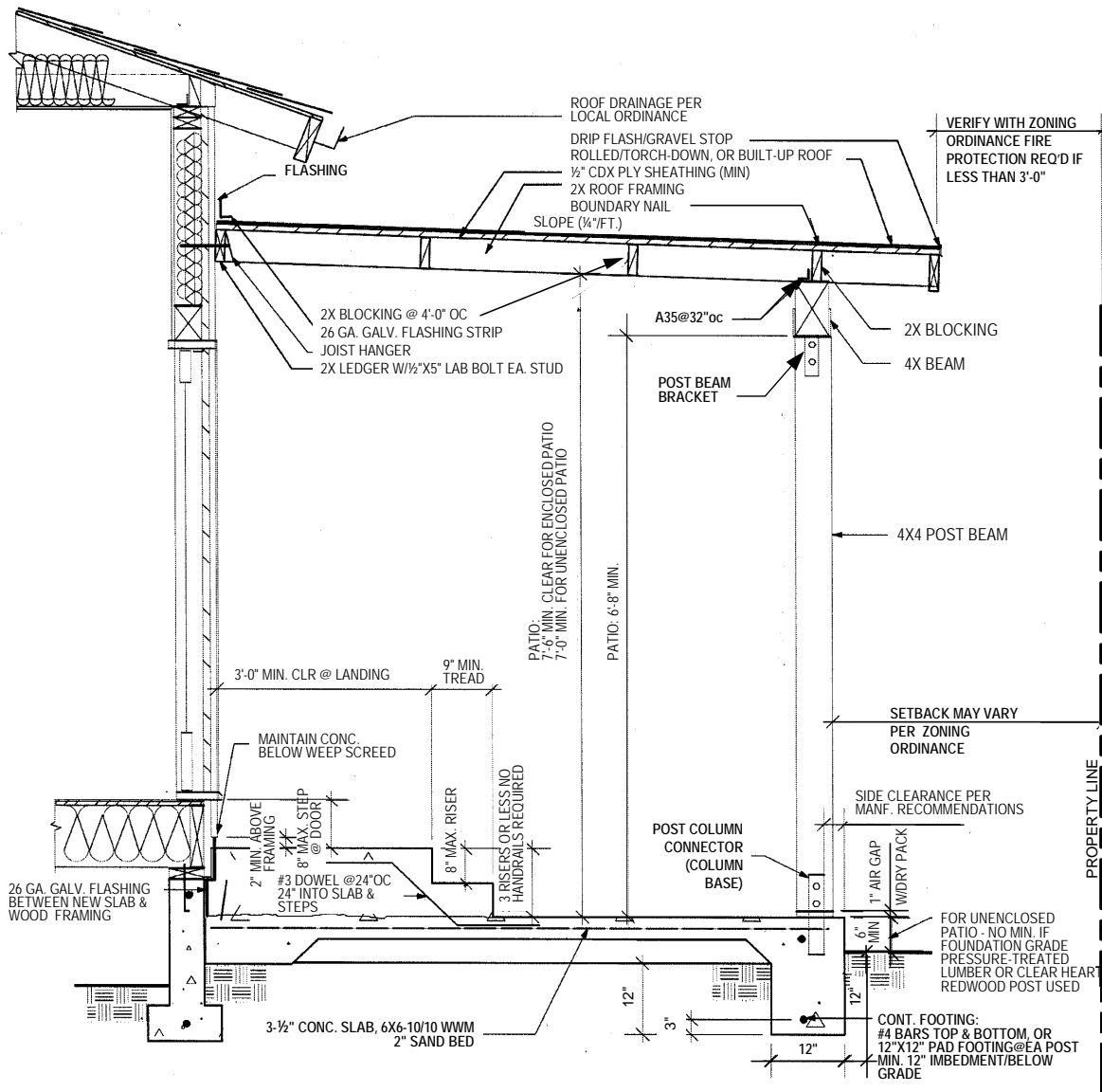




KING CITY
CALIFORNIA

**BUILDING DEPARTMENT
INFORMATIONAL HANDOUT #20-1**

**ATTACHED PATIO COVER DETAILS
(Page 1 of 4)**



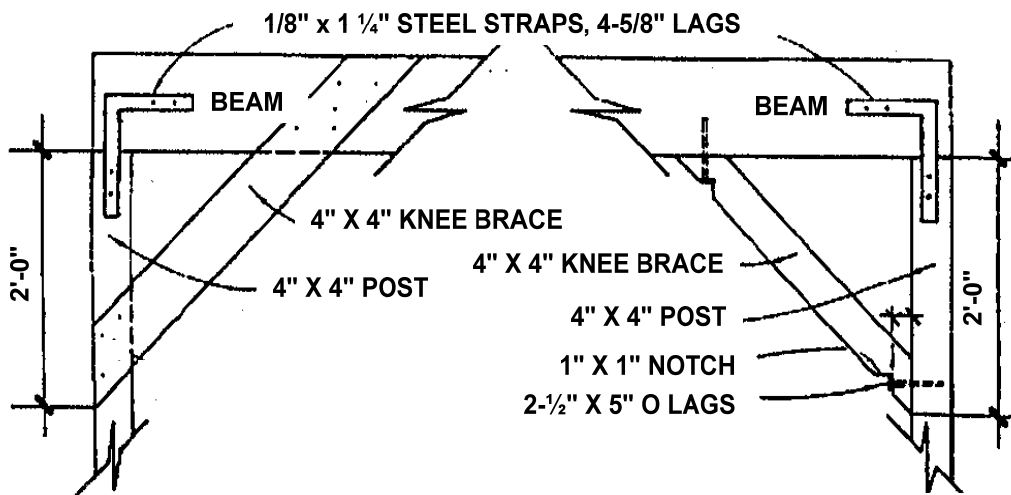


KING CITY
CALIFORNIA

**BUILDING DEPARTMENT
INFORMATIONAL HANDOUT #20-2**

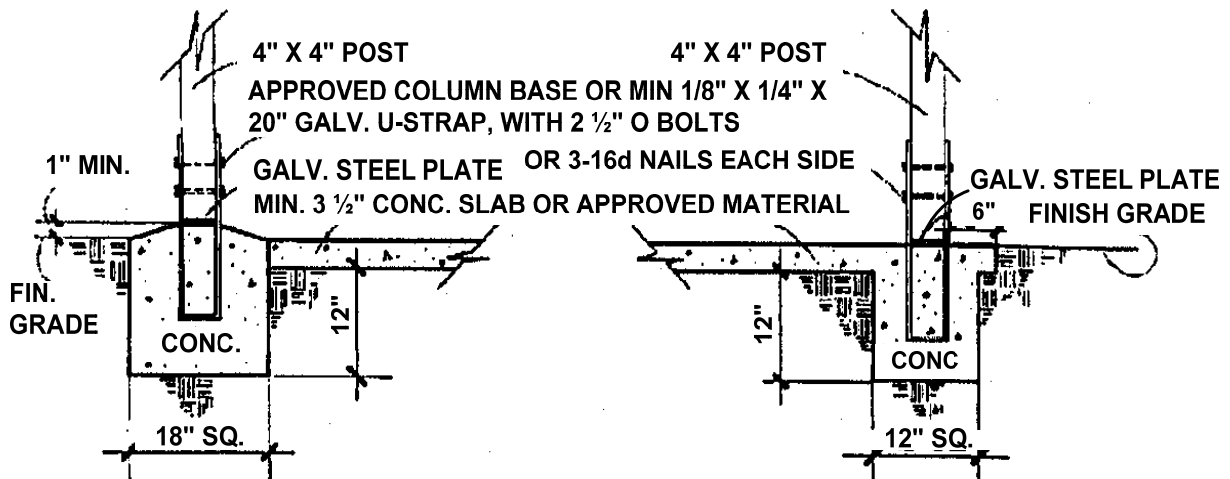
ATTACHED PATIO COVER DETAILS

(Page 2 of 4)



DETAIL "B"

DETAIL "B", ALTERNATE



DETAIL "C"

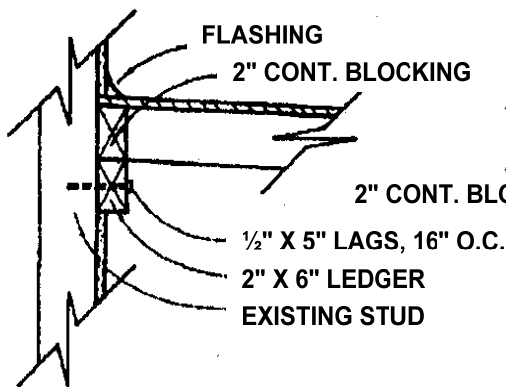
DETAIL "C", ALTERNATE



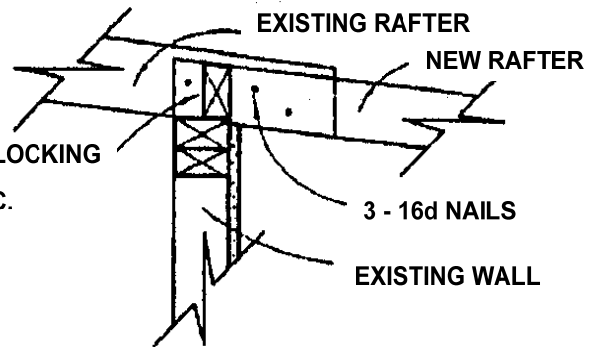
KING CITY
CALIFORNIA

**BUILDING DEPARTMENT
INFORMATIONAL HANDOUT #20-3**

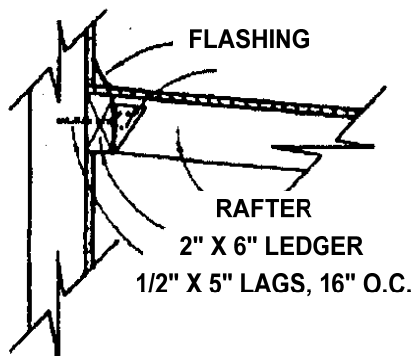
**ATTACHED PATIO COVER DETAILS
(Page 3 of 4)**



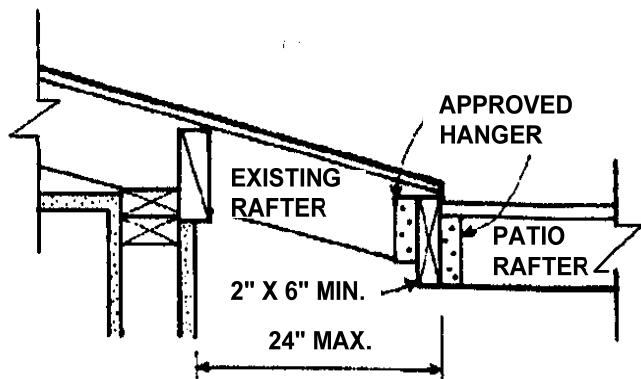
DETAIL "A"



DETAIL "A", ALTERNATE 1



DETAIL "A", ALTERNATE 2

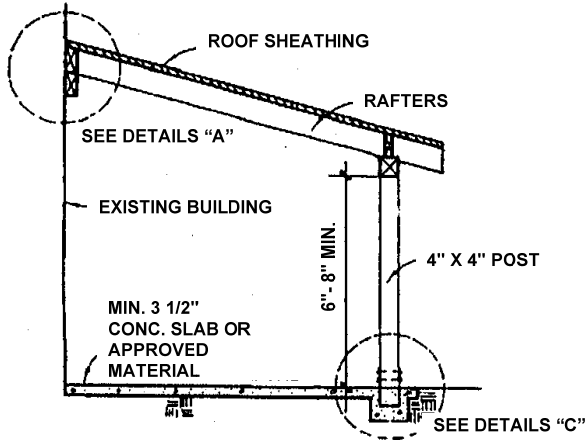


DETAIL "A", ALTERNATE 3

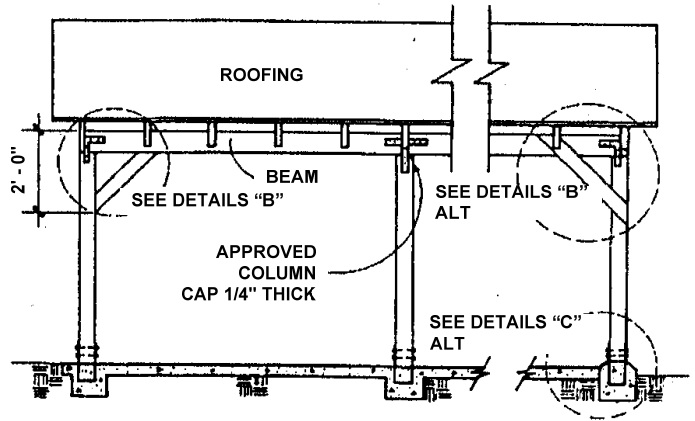


**BUILDING DEPARTMENT
INFORMATIONAL HANDOUT #20-4**

**ATTACHED PATIO COVER DETAILS
(Page 4 of 4)**



SECTION A-A



SECTION B-B

NOTES:

1. Longer side and one additional side of patio shall be 65% open, below 6'-8" above the floor.
2. One hour fire wall required when exterior face of post/wall is located less 3'-0" from property line.
3. Roof sheathing, when exposed to weather, plywood shall be of exterior type. Use minimum 3/8" CDX plywood sheathing nailed with 8d 6" on the edge and 12" on the field.